



Walk-in Tub Specifications

Model B3237

Tub Dimensions: 31½ X 37½ X 38½ inches

Top Diagonal: 49 inches

Tub Weight: 175 lbs

Note: No system or accessories included in tub weight.

Crated Dimensions: 34 X 39 X 48 inches

Crated Weight: 210 lbs

Note: No system or accessories included in crated weight.

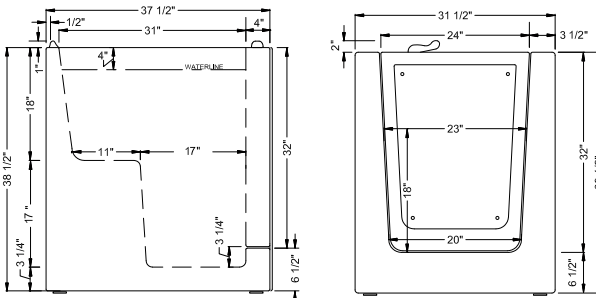
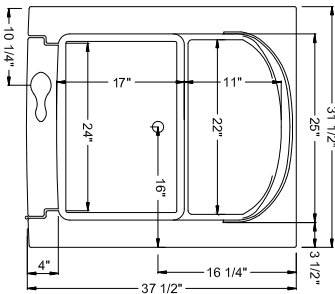
Occupant:	120 lbs	200 lbs	250 lbs
Gallons:	46	42	39

Materials: stainless steel frame
sturdy, woven-fiberglass
high-gloss gel-coat finish

Colors Available: white

Tub frame, body and door seal under 10-year warranty

Fixtures and system components under 2-year warranty



Tub Features:

Right or left-hinge outward-swinging door

Ergonomic door handle

Tile flanges down

Stainless steel tub frame with 6 adjustable leveling feet

Included Accessories (standard with every tub):

Wall-mounted chrome faucet set

- ADA-compliant all-brass construction

- 3/4" water supply capable of filling tub at 18 gallons per minute

Drain and overflow kit

- Elegant, chrome-plated design adheres to ADA standards

- Easy-to-use, cable-actuated stopper assembly

- 1-1/2" drain compatible with nearly all residential plumbing

Optional Massage Systems:

Senior-friendly electronic keypad standard with all systems

All system components UL certified

Air massage system (110-120V)

- 14 state-of-the-art air jets

- Ultra-quiet, variable-speed CG Air blower

- Ceramic heating element warms blower air

- Automatic purge cycle

Hydromassage system (110-120V)

- 10 vigorous, individually-adjustable, directional water jets

- Hydromassage pumps are ultra-quiet and energy efficient

- "Safety Suction" safely circulates the tub water

Dual massage system (110-120V)

- 14 air jets and 10 water jets

- Includes all other features of the air massage and hydromassage systems listed above

Optional Accessories:

- In-line heater for hydro and dual massage systems

- Shower slide bar

- Thermostatic mixing/anti-scald valve

- Custom walk-in tub shower curtain with L-shaped metal rod & hooks

- VUV-powered Ozone Purification System

- Aromatherapy system with essential oil kit

- Chromotherapy 7-color light system

- End panel for 1 or 2 wall installations